



June 2014

## Technical Rider « Le Poivre Rose »

This rider is part of the contract, it can be discussed in advance and only in advance.  
If no reaction was given at least one month before the first show, it is considered approved.

---

### TEAM ON TOUR

- 5 Performers
  - 1 Technician
  - 1 Musician (in case of a « live » performance)
- + Production Team (the number of person will be confirmed in due course).
- 

### TECHNICAL FACTS

#### Stage

**Configuration type**: frontal

**Stage Opening** : 10m

**Stage Depth** : 8m

**Minimum height** : 8m (under the technical grid)

**Curtain Set-Up** : Black Tabs with Italian set-up (please refer to the light plot attached to this rider).

**Floor cover** : Black dance mat.

**Floor resistance on point working load**: 400 kg

**Rigging**: Please refer to the rigging plan enclosed to this rider.

**Backstage**: 4m minimum cleared space on SR, 1.5m minimum cleared space on SL. The backstage must be clear-clean and properly lit with blue lights.

**Other** : A supply of running water and a drain near the stage. Standard connection ½".

### Contact

**Accommodation** : Amaury Vanderborgh +32 498 262 018 [info@ciedupoivrerose.com](mailto:info@ciedupoivrerose.com)

**Technique**: Thomas Dechaufour +32 498 593 840 [technique@ciedupoivrerose.com](mailto:technique@ciedupoivrerose.com)

**Lights** : Olivier Grimmeau +32 495 662 615 [technique@ciedupoivrerose.com](mailto:technique@ciedupoivrerose.com)



June 2014

## House Team

Light Technicians : 2 people for the adjustments and focusing, one person for the rest of the time.

Sound Technician : 1 sound engineer who will be responsible for mixing during the show (live or soundtrack version). His présence will be asked at the arrival of the company until it's departure.

Stage Technicians : 2 people for loading and unloading the truck, as well as for the implentation of the rigging points.

## Lights

The lighting equipment must be installed according to the attached light plot, wired and ready to be focused at the arrival of the company.

Units (channels : 22, 25, 26, 28, 29, 30, 31 and 36) can be moved according to the rigging possibilities of the company's truss.

In case of a « live music » performance, please provide an extra 8 PC 1kW with barndoors. The placement of these units will be determined during set-up.

## Sound

The diffusion system must be adapted to the venue, installed and fonctionnal at the arrival from the company.

CD player with auto-pause.

Monitor speakers to adequately cover the stage.

In case for a « live music » performance, please provide the following microphones :

- 1 Lavalier Microphone (Type SENNHEISSER EW112PG3)
- 3 Pick-up Microphones (Type SENNHEISSER MKH 40-P48)

In any case, we recall that the house sound engineer will be in charge of the mixing.

### Contact

**Accomodation** : Amaury Vanderborght +32 498 262 018 [info@ciedupoivrerose.com](mailto:info@ciedupoivrerose.com)

**Technique**: Thomas Dechaufour +32 498 593 840 [technique@ciedupoivrerose.com](mailto:technique@ciedupoivrerose.com)

**Lights** : Olivier Grimmeau +32 495 662 615 [technique@ciedupoivrerose.com](mailto:technique@ciedupoivrerose.com)



June 2014

## Planning

Build-up duration: 2h

Light Focus duration: 1h30

Warm-up on stage duration (prior to the doors opening): 1h

**Performance duration: 1h10**

Build-down: 2h

---

## ACCOMODATION

The organiser will provide 6 hotel rooms (7 in case of a « live music » version) for the members of the company on tour. Two additional rooms can be requested if the presence of the production is confirmed.

It will be asked to the venue to provide 2 secure parking spaces for a van (H : 2,5 m ; L : 5,55m) and a passenger car.

Access to a washing machine and a tumble dryer is required.

Evening meals will be served after the performance.

Dressing Rooms : 3 secure dressing rooms (4 in case of a « live music » version) heated, with table, chairs and mirror, electricity access, shower and that can comfortably accomodate 6 or 7 people.

Thank you for providing an assortment of sweet and salty snacks, fresh fruits and cool drinks (Beer, Coke Zero, Regular Coke, Juices and Water) as well as hot drinks (tea and coffee) in the dressing rooms.

Access to a fast internet connection is required.

Provide a quick backstage dressing room (with blue lighting).

## Contact

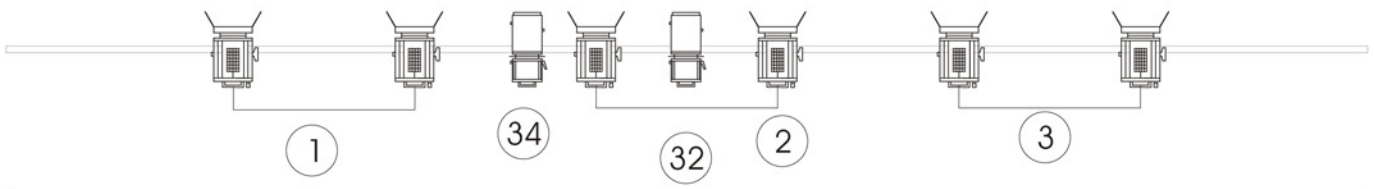
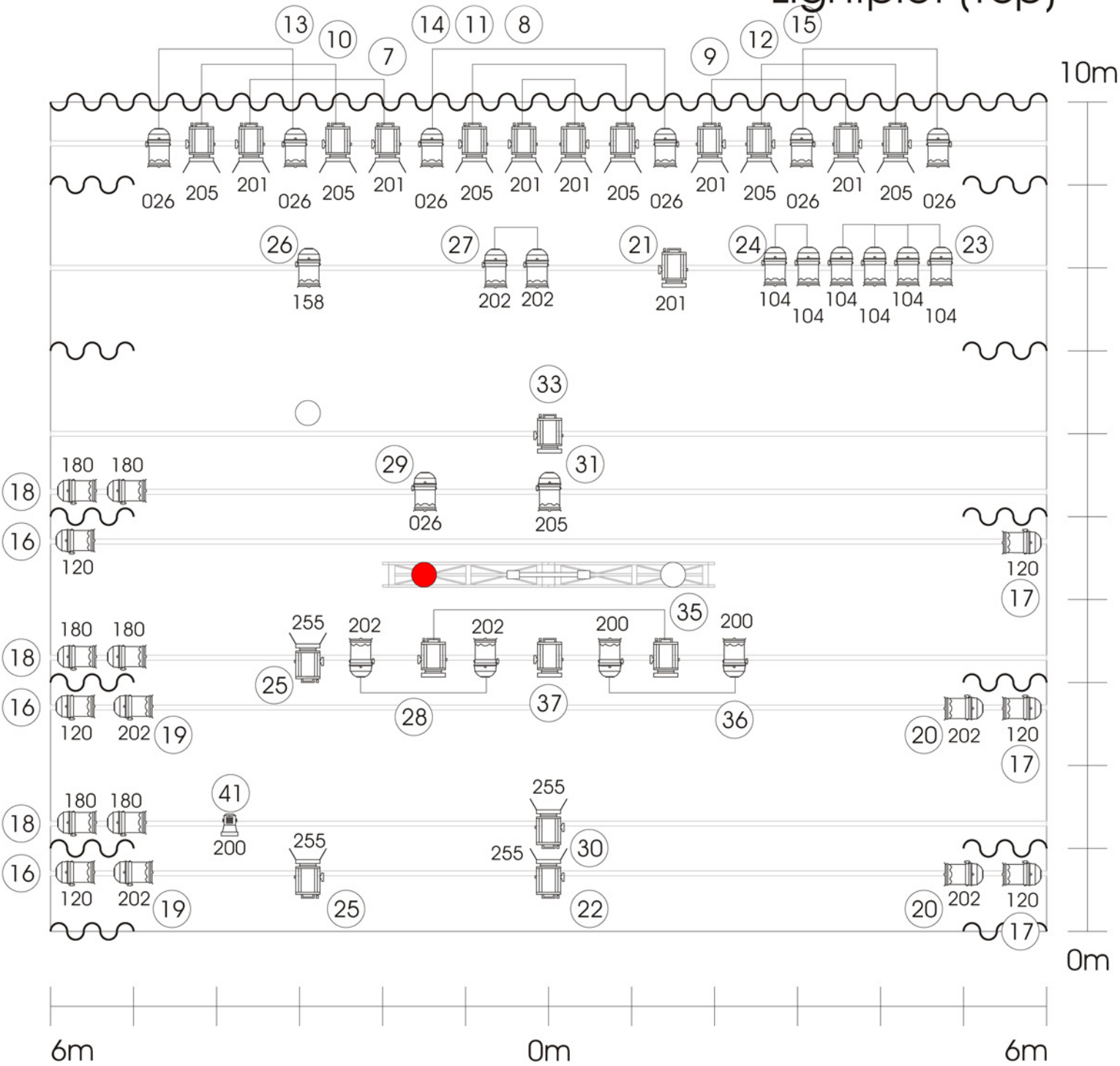
**Accommodation** : Amaury Vanderborcht +32 498 262 018 [info@ciedupoivrerose.com](mailto:info@ciedupoivrerose.com)

**Technique**: Thomas Dechaufour +32 498 593 840 [technique@ciedupoivrerose.com](mailto:technique@ciedupoivrerose.com)

**Lights** : Olivier Grimmeau +32 495 662 615 [technique@ciedupoivrerose.com](mailto:technique@ciedupoivrerose.com)

# Cie POIVRE ROSE

## Lightplot (Top)



Le Poivre Rose  
June 2014

Design: Olivier Grimmeau (Blindly)  
olivier.grimmeau@skynet.be




21x  PC 1kW with Barndoor

43x  PAR64 CP62 1kW

14x  Profile 1kW (type Robert Juliat 614)

6x  PC 2kW with Barndoor

1x  PAR36 (F1)

8x  Boom

**Gels list:**

026 - 7x PAR

104 - 6x PAR

120 - 6x PAR

156 - 2x PAR

158 - 1x PAR

180 - 6x PAR

200 - 2x PAR + 1x PAR36

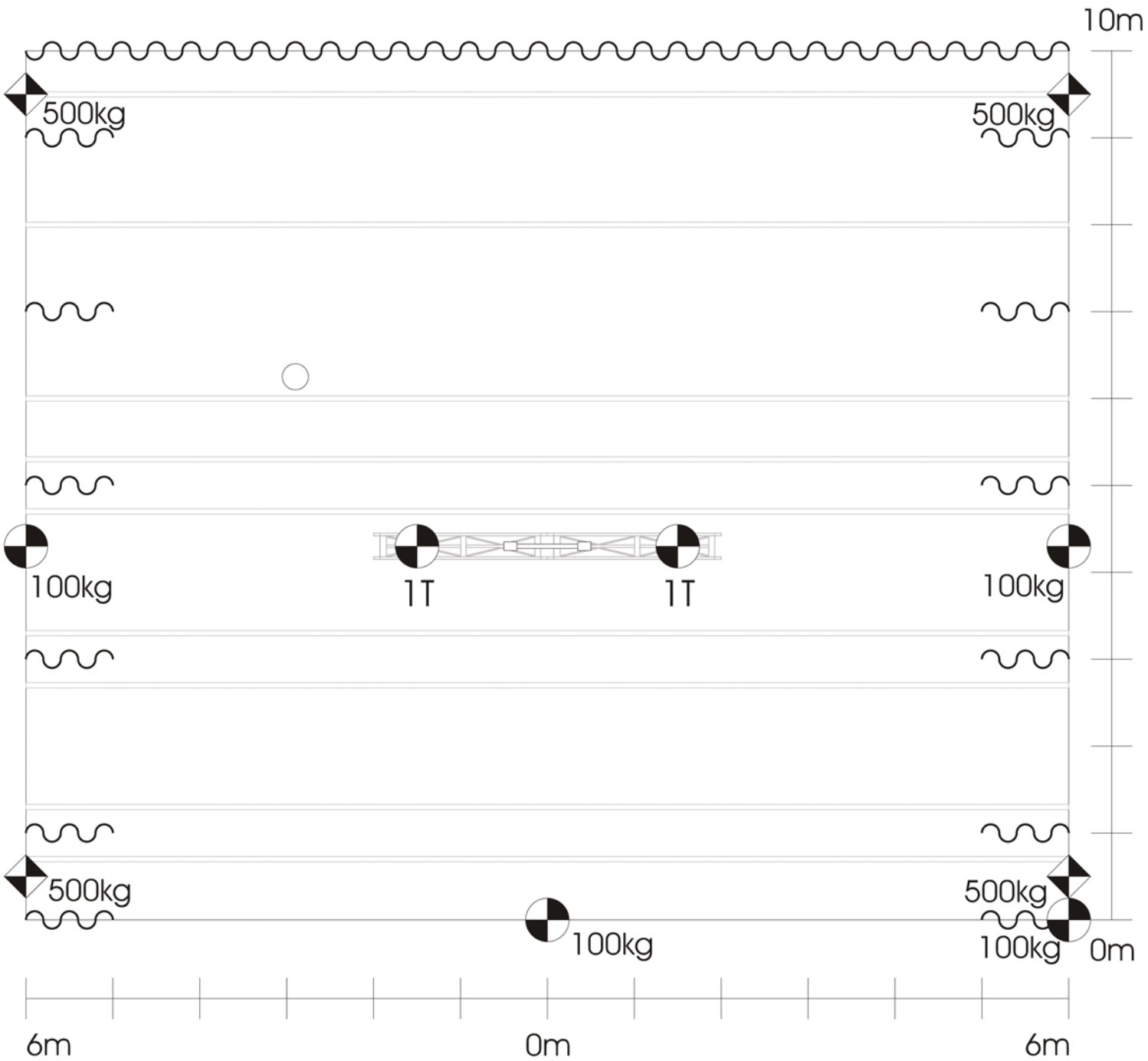
201 - 7x PC 1kW + 2x PAR

202 - 10x PAR

205 - 6x PC 1kW + 1x PAR

255 - 4x PC 1kW

# Rigging plot



-  Hanging point
-  Anchor Point